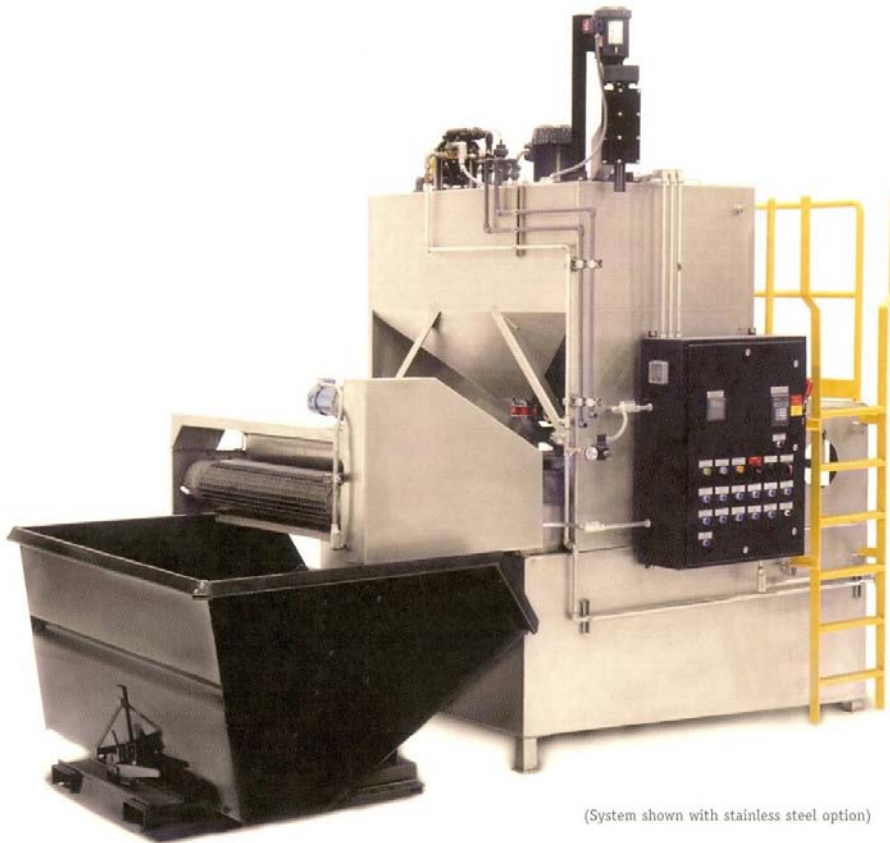


AUTOMATIC WASTEWATER TREATMENT

Ringwood CE-400

Ringwood's wastewater treatment units optimize the use of clay based flocculants to clarify industrial wastewaters.



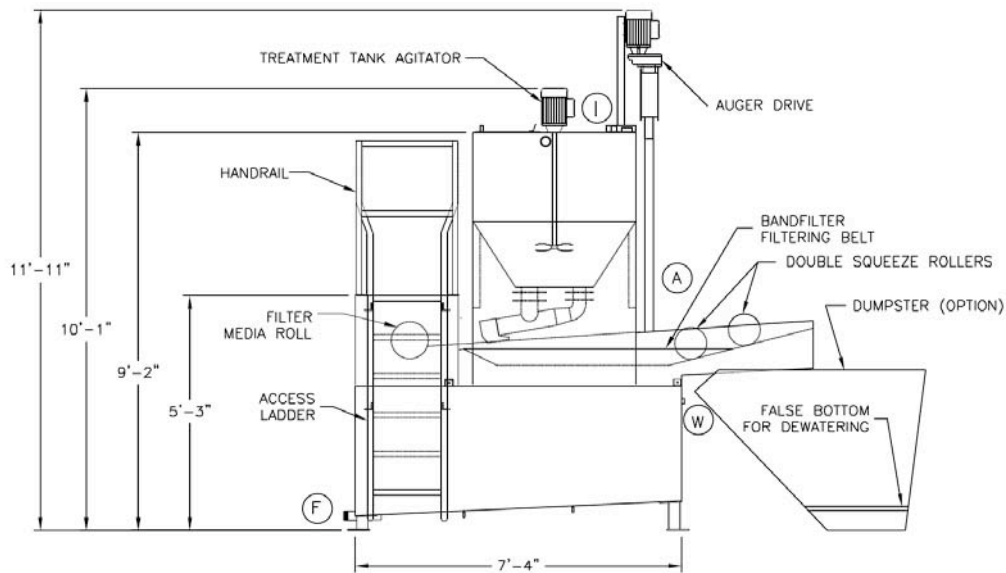
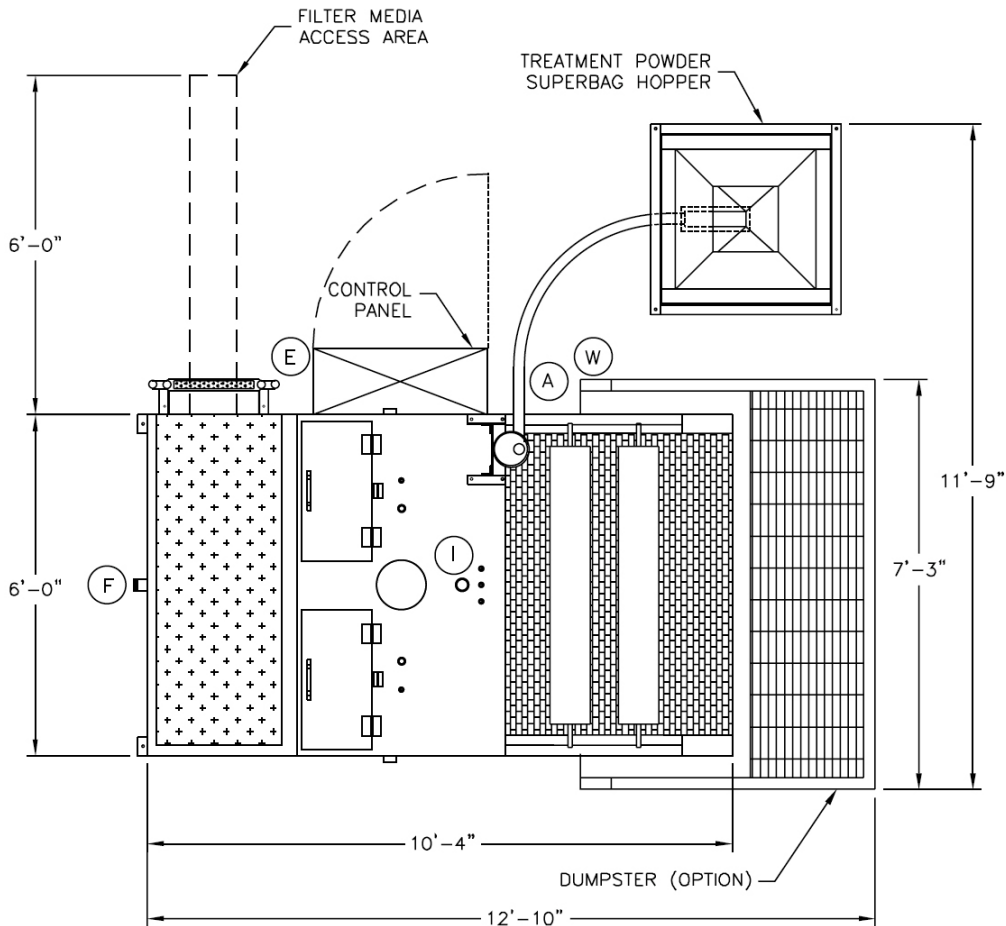
(System shown with stainless steel option)

Standard Features:

- Full Automation GA Series with manual overrides
- Maximum throughput: 1200 GPH
- 400-gallon treatment tank
- Allen-Bradley Micrologix PLC controls
- UL approved control panel
- 3 horsepower heavy duty agitator with jet basket
- Treatment tank auto washdown
- Pre-plumbed for effluent pump
- Automatic chemical feed system with 300 lb. hopper, complete with 2000 lb. superbag support frame
- Double rollers for greater dewatering
- Equipment Measurements: Length: 10'4", Width: 7'4", Height: 11'11", Weight: approximately 5000 lbs.

Optional Features:

- Stainless steel construction
- 3 cubic yard dumpster with false bottom
- pH control system
- 2.0" cast iron influent diaphragm pump package
- 2.0" aluminum effluent diaphragm pump package
- Auto washdown for filtrate tank



Service Requirements:

- E** 480 VAC, 30 AMP, Grounded, 3 Phase Power Terminated at the Disconnect in the Control Panel.
- A** 1" FNPT Air Supply Connection. 80-100 PSI, Clean, Dry, Air Required With Locking Handle Valve on Service Line.
- W** 1" FNPT City Water Supply Connection. 30 PSI Required, With Locking Handle Valve on Service Line.
- I** 2" FNPT Influent Water Inlet Connection.
- F** 2" MNPT Effluent Water Discharge Connection.

RCM Deburring, Inc.
26893 Bouquet Canyon Rd.
Suite C-172
Santa Clarita, CA 91350

www.rcmdeburring.com
email: sales@rcmdeburring.com
telephone: 661 • 296 • 9611
fax: 661 • 296 • 9184